



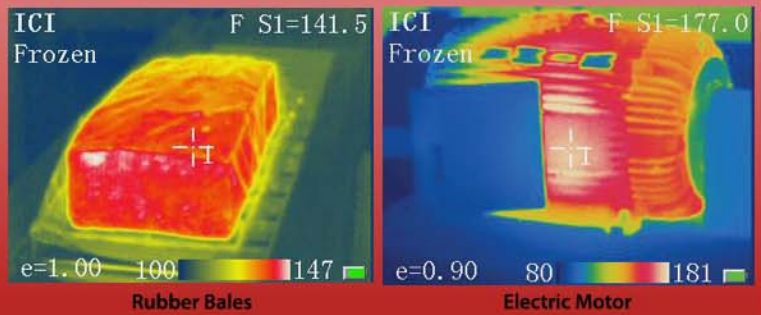
ToughCam EL

Features

- Affordable
- Single point temperature measurement
- 360 degree LCD display
- Built in high-resolution color 2.8" LCD
- Car charger
- Laser pointer
- 50Hz RCA video output
- Stores 100 images

Applications

- Electrical inspections
- Mechanical surveys
- Building inspections
- Flat roof surveys
- Process equipment monitoring
- Research & development
- Medical & veterinary imaging



The new ToughCam EL portable thermal imager offers outstanding image quality and temperature measurement performance in an affordable, rugged and easy to use infrared camera.



ToughCam EL

ToughCam EL



ToughCam EL

Performance

Detector	Amorphous Silicon micro-bolometer 160 X 120
Accuracy	±2°C or ±2% of reading, Whichever is greater
Thermal Sensitivity	0.12°C @ 30°C
Spectral Range	8-14 um
Field of View	12° x 9°
Spatial resolution (IFOV)	1.3 mrad
Minimum focus distance	0.3m
Temperature Range	-20°C to +250°C (-4°F to + 482°F)
Temperature Units	C, F or K

Outputs

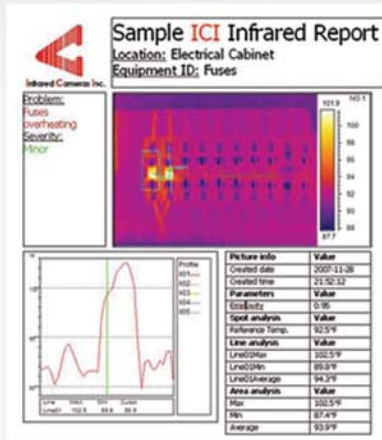
Image Frequency	50Hz
Image Display	High resolution color 2.8" LCD
Image Storage	Stores up to 100 images in onboard memory
Laser Pointer	Class 2, 1mw / 635nm red
Interfaces	USB - Image, measurement data transfer

Power

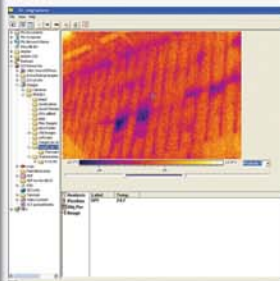
Power	10~14 V - Power supply provided
Battery	Rechargeable li-ion, 3 hours continuous operation

Environmental / Mechanical

Operating Temperature	-15°C to +50°C (-5°F to 122°F)
Storage Temperature	-25°C to +60°C (-13°F to 140°F)
Environmental Protection	IP 54
Size	10.6" x 3.9" x 2.95"
Weight	1.3 lb.s (including battery and lens)
Palettes	3 palettes including color and blk and white
Tripod Mount	Standard ¼ "-20



Left: Prepare professional reports with IR Reporter software.
Below: Use ICI Explorer software to browse thermal images.



Accuracy

This ergonomically designed infrared camera is based on an uncooled microbolometer core that provides crisp imagery and accurate temperature measurements. Adjustable emissivity input and ambient temperature compensation insures accurate temperature readings.

Long life battery

A long life rechargeable Lithium-ion battery pack operates the camera up to three hours.

Large image capacity

Up to 100 images can be stored to Toughcam's on board memory. A USB interface provides image transfer to your PC for analysis, report generation and printing.

Laser pointer

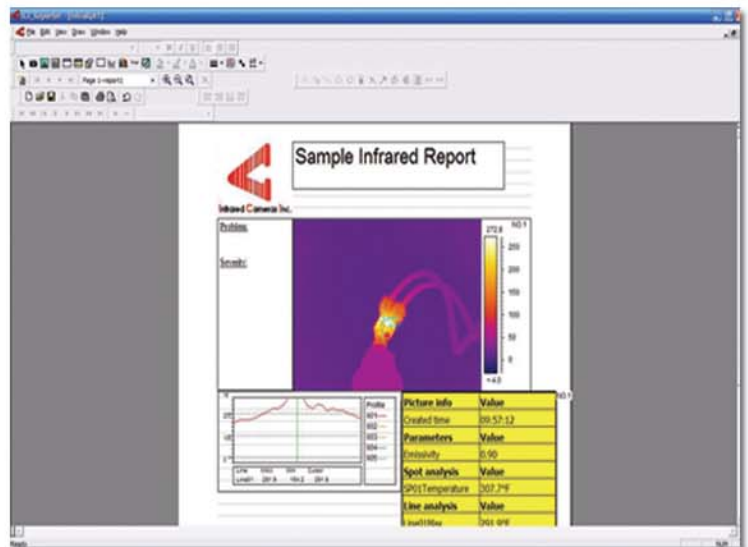
There is a built in laser pointer that facilitates identification of the equipment under inspection.

Temperature measurement

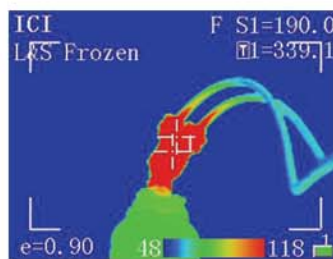
The ToughCam EL uses a single point temperature measurement.

Standard Accessories

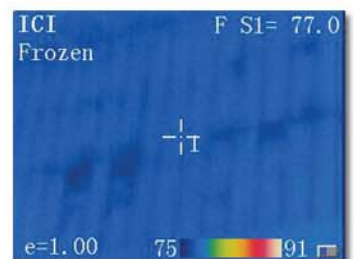
These include a heavy duty carrying case with shoulder strap, two batteries (Li-Ion, rechargeable), battery charger, car charger, lens cap, adumbral cover, and a USB connection cable. The ToughCam EL also comes standard with professional analysis software (IR Reporter).



Above: IR Reporter Software with sample report



Transformer Bushings



Coliseum wall, distance 150 ft.

www.InfraredCamerasInc.com
2105 W. Cardinal Dr.
Beaumont, Tx. 77705
1-866-861-0788
409-861-0788